

# Model 132, 133

50 Hz 60 Hz

## Drain Pump

### Features:

- Applications include, laundry tray pump, wet bar sink, lavatory, air conditioning condensate or dehumidifier water removal
- No need to destroy concrete floors
- Pumps any direction
- Automatic pumps with tank cord seals and all hardware for easy assembly

### Pump Features (Model 72, 88)

- Automatic, float operated mechanical switch
- Cast iron motor housing with rust-resistant, baked-on enamel finish to provide great heat dissipation (model 88)
- Engineered thermoplastic and stainless steel components provide improved corrosion resistance (model 72)
- Non clogging vortex impeller passes up to 3/8" (9 mm) spherical solids
- Maximum operating water temperature 104 °F (40 °C)
- 9 ft (3 m) cord and plug

### Basin Features

- Corrosion-resistant
- High capacity
- Gas-tight lid
- 1-1/2" discharge, 2" Vent, 1-1/2" inlet
- Gasket seal for avoiding smell
- Fits under most sinks

### Check Valve Features

- "Full Flow" design
- 1-1/2" or 1-1/4" slip x slip union
- PVC construction
- Basin Passes 10' Stack Test

**100% factory tested**



Trusted. Tested. Tough.®

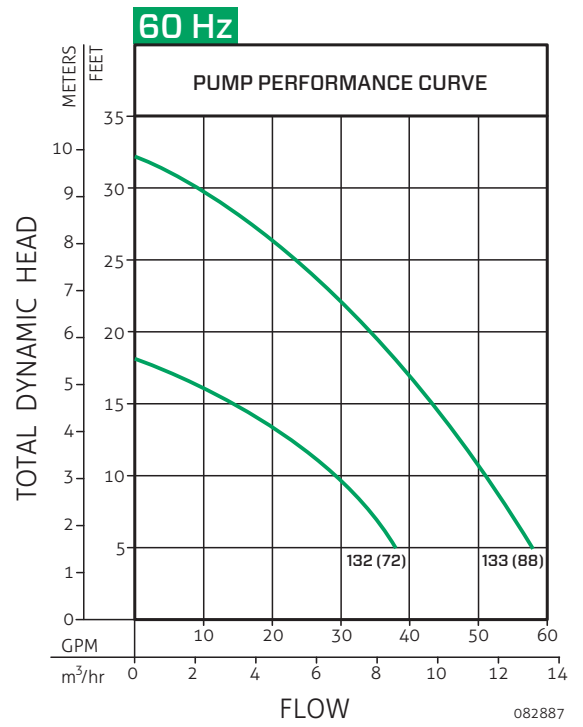
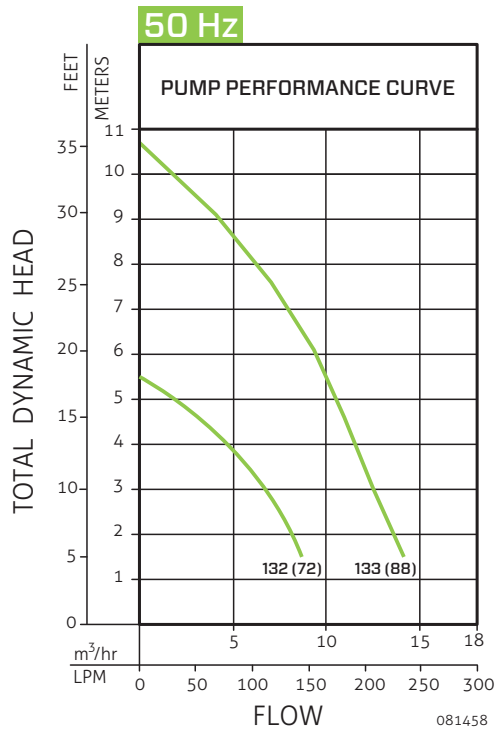


Model 132 (72)  
Preassembled System



Model 133 (88)  
Preassembled System

ZT0098\_Ec  
0821  
Supersedes  
0914

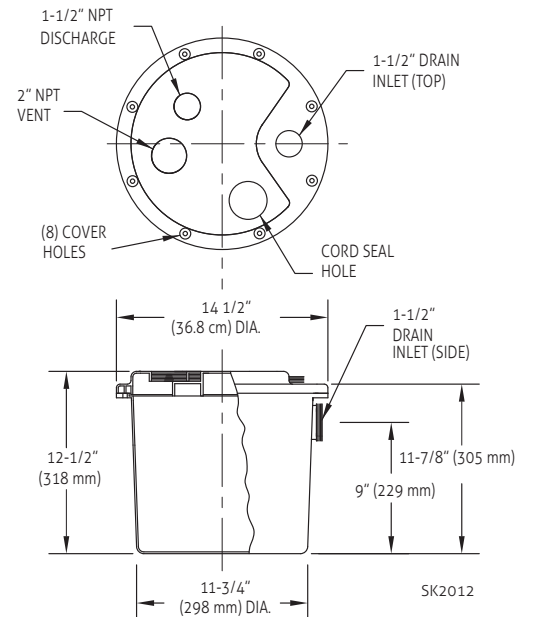
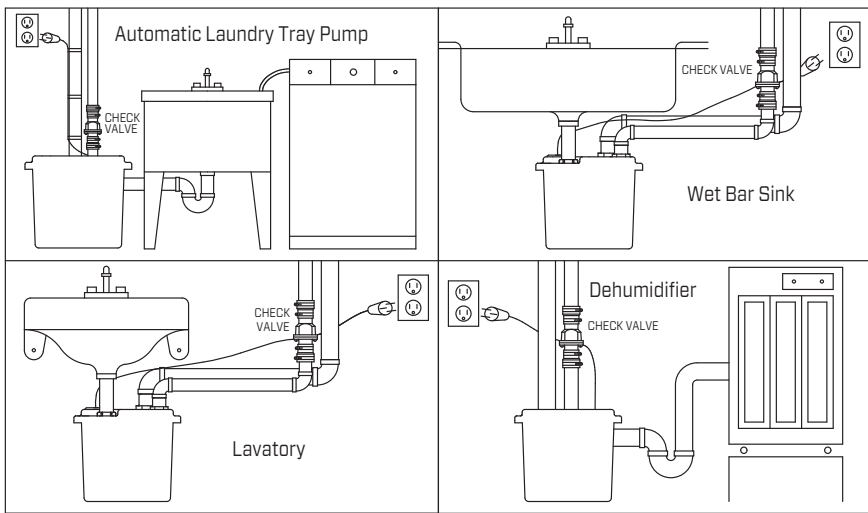


### 50 Hz

Model	Mode	Volt (V)	Ph Ø	Amps (A)	Motor		Weight	
					kW (p1)	HP	kg	lbs
U72	Auto-Vertical	220	1	2.0	0.38	1/3	4.6	10.1
U88	Auto-Vertical	220	1	3.8	0.76	3/4	11.7	25.8

### 60 Hz

Model	Mode	Volt (V)	Ph Ø	Amps (A)	Motor		Weight	
					HP	kW (p1)	kg	lbs
M72	Auto-Vertical	115	1	3.1	1/3	0.29	4.6	10.1
BK72	Auto-Vertical	220	1	1.6	1/3	0.34	4.6	10.1
M88	Auto-Vertical	115	1	8.5	3/4	0.81	11.7	25.8
D88	Auto-Vertical	230	1	3.6	3/4	0.76	11.7	25.8



Product information presented here reflects conditions at time of publication. Consult factory regarding discrepancies or inconsistencies.

© Copyright 2021 Zoeller® Co. All rights reserved.  
www.zoellerpumps.com

